

GLOBE BUILDING

LOBBY + LOWER LOBBY



Known for its natural lighting, interior wooden beams and arched windows, the Globe Building was designed by architect Alexander Chapoton in 1888 for the Globe Tobacco Company.

Exposed brick walls and vaulted ceilings complement the timber details, masonry and the seven-story sunlit atrium that helped land the Globe Building on the National Register of Historic Places list.

The intimate 1,700-square-foot lobby can host semi-private gatherings with up to 50 guests, as well as film and photo shoots.



GLOBE BUILDING

LOBBY + LOWER LOBBY



407 E. FORT ST.
DETROIT, MI 48226



LOBBY: 1,718 sq ft



FULL CAPACITY:
· 50 strolling



AV CAPABILITIES:
· No existing AV equipment



FURNITURE:
· Limited soft seating furniture
is available



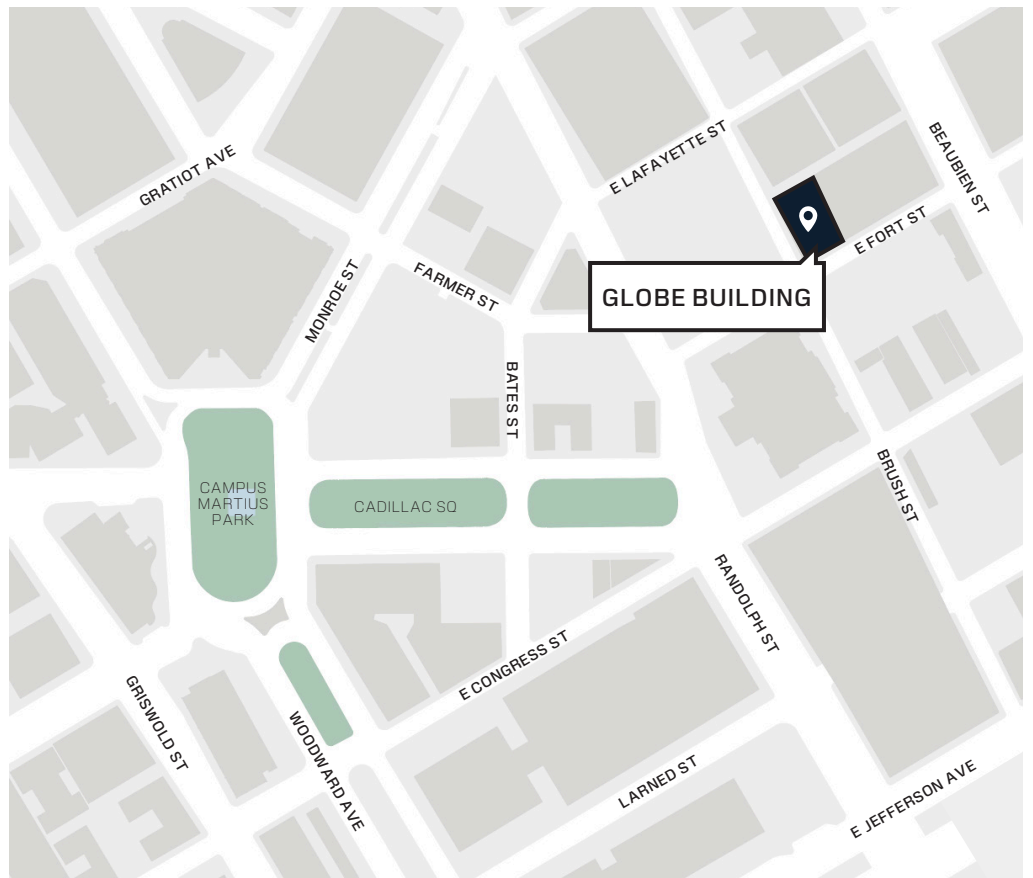
CATERING:
Please contact us for a full list of
preferred caterers.



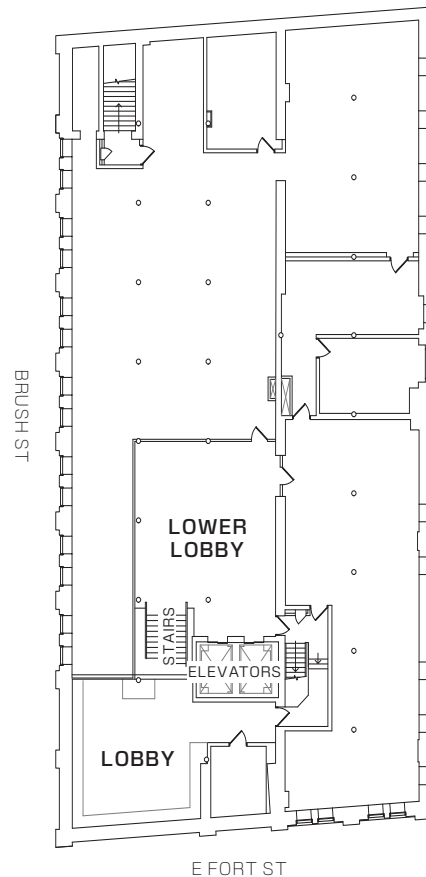
BEVERAGES:
Rock Events is the exclusive
provider of alcoholic beverage
service.



PARKING:
· Self-parking



FLOOR PLAN:



FOR MORE INFORMATION
(313) 373-8720

Venues@RockEvents.com

RockEventsDetroit

